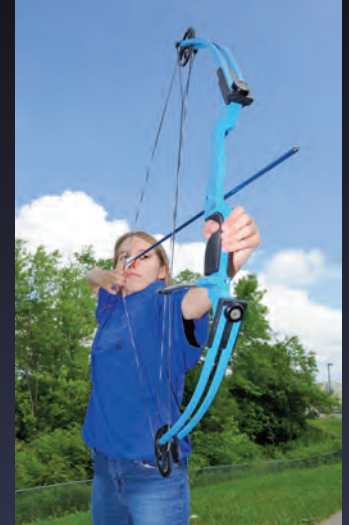




**EOTAC™**



# **SHOOTING SPORTS PROGRAM**

# EOTAC SHOOTING SPORTS PROGRAM

Providing premium clothing to NASP members at special member pricing.

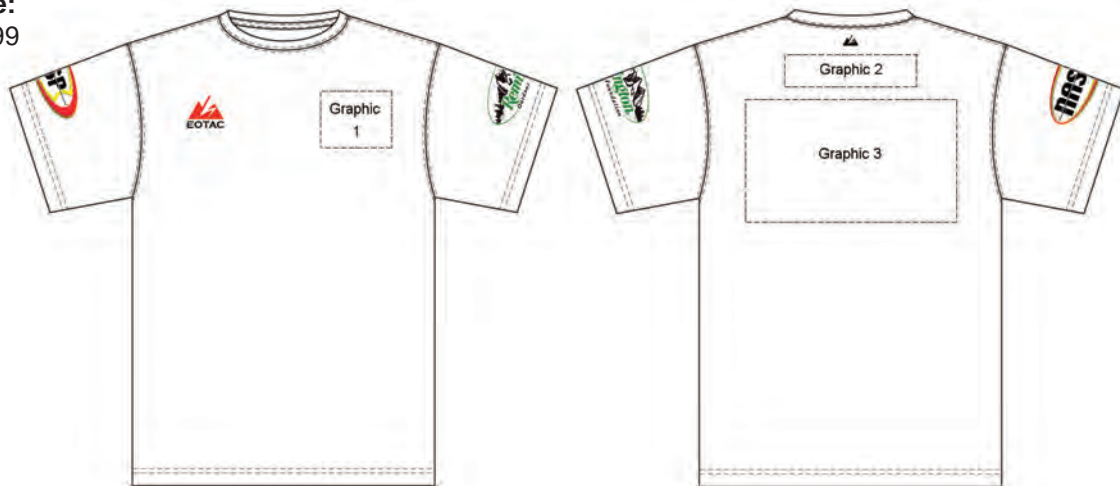
EOTAC has both a performance short-sleeve polo shirt and short-sleeve tee shirt available to NASP members. These shirts are constructed from our lightweight Shooting Sports Polyester that features wicking, anti-microbial, and a UPF rating of 30. Both shirts come with your school name and logo imprinted on the front and back of the shirt. They are available in nine colors.

## Short-Sleeve Shooting Sports Tee (SST) Shirt

**SST Exclusive NASP Price:**

XS, S, M, L, XL, 2XL - \$19.99

3XL -



## Short-Sleeve Shooting Sports Polo (SSP) Shirt

**SSP Exclusive NASP Price:**

XS, S, M, L, XL, 2XL - \$29.99

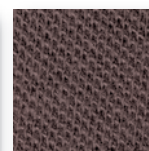
3XL -



### Available Shirt Colors:



Black



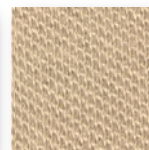
Navy



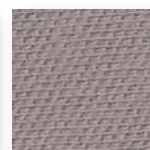
Hunter Green



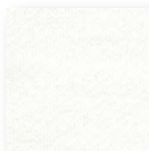
Red



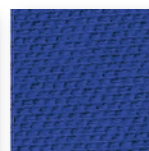
Khaki



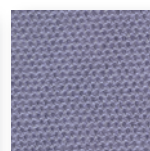
Grey



White



Royal Blue



Light Blue

### Custom Shirt Colors:

Dye sublimation is available for both the SST and SSP shirts. With dye sublimation, we can create multi-color graphics that are dyed into the fabric.

Cost: \$10.00 per shirt extra

# Team Member Order Form

To order your team polo shirt or tee shirt, simply complete this form and submit it to EOTAC for processing. You can also go to our website and submit your order online at: <http://nasp.eotac.com/order>

**Order Submitted By:** (please select one)

Coach \_\_\_\_ Teacher \_\_\_\_ Parent \_\_\_\_ Student \_\_\_\_ Coordinator \_\_\_\_ Other: \_\_\_\_\_

## School Information:

School Name: \_\_\_\_\_ Contact: \_\_\_\_\_

Address: \_\_\_\_\_ City: \_\_\_\_\_ State: \_\_\_\_\_ Zip: \_\_\_\_\_

Phone: \_\_\_\_\_ Fax: \_\_\_\_\_ Email: \_\_\_\_\_

## Team Information:

Team Name: \_\_\_\_\_

Graphic 1 Description: \_\_\_\_\_

Graphic 2 (school or team name): \_\_\_\_\_ Lettering Color: \_\_\_\_\_

Graphic 3 Description: \_\_\_\_\_

Comments: \_\_\_\_\_

Graphics should be mailed to EOTAC along with a copy of this Order Form or emailed to [orders@eotac.com](mailto:orders@eotac.com).

Please see the back of this page for more instructions.

## Shirt Information:

Color: \_\_\_\_\_ Size: \_\_\_\_\_ Quantity: \_\_\_\_\_

Color: \_\_\_\_\_ Size: \_\_\_\_\_ Quantity: \_\_\_\_\_

Color: \_\_\_\_\_ Size: \_\_\_\_\_ Quantity: \_\_\_\_\_

Color: \_\_\_\_\_ Size: \_\_\_\_\_ Quantity: \_\_\_\_\_

Color: \_\_\_\_\_ Size: \_\_\_\_\_ Quantity: \_\_\_\_\_

Color: \_\_\_\_\_ Size: \_\_\_\_\_ Quantity: \_\_\_\_\_

Color: \_\_\_\_\_ Size: \_\_\_\_\_ Quantity: \_\_\_\_\_

Color: \_\_\_\_\_ Size: \_\_\_\_\_ Quantity: \_\_\_\_\_

Color: \_\_\_\_\_ Size: \_\_\_\_\_ Quantity: \_\_\_\_\_

Color: \_\_\_\_\_ Size: \_\_\_\_\_ Quantity: \_\_\_\_\_

Color: \_\_\_\_\_ Size: \_\_\_\_\_ Quantity: \_\_\_\_\_

Color: \_\_\_\_\_ Size: \_\_\_\_\_ Quantity: \_\_\_\_\_

Color: \_\_\_\_\_ Size: \_\_\_\_\_ Quantity: \_\_\_\_\_

Color: \_\_\_\_\_ Size: \_\_\_\_\_ Quantity: \_\_\_\_\_

## Custom Shirt Information:

Customer Color: \_\_\_\_\_ Size: \_\_\_\_\_ Quantity: \_\_\_\_\_

Customer Color: \_\_\_\_\_ Size: \_\_\_\_\_ Quantity: \_\_\_\_\_

Customer Color: \_\_\_\_\_ Size: \_\_\_\_\_ Quantity: \_\_\_\_\_

Customer Color: \_\_\_\_\_ Size: \_\_\_\_\_ Quantity: \_\_\_\_\_

Customer Color: \_\_\_\_\_ Size: \_\_\_\_\_ Quantity: \_\_\_\_\_

*There is an additional charge of \$10 per shirt for custom dye sublimation.*

## Billing & Ship To:

Name: \_\_\_\_\_ Company/School: \_\_\_\_\_

Address: \_\_\_\_\_ City: \_\_\_\_\_ State: \_\_\_\_\_ Zip: \_\_\_\_\_

Phone: \_\_\_\_\_ Email: \_\_\_\_\_

Credit Card # \_\_\_\_\_ Expiration: \_\_\_\_\_ Security Code: \_\_\_\_\_

Name on Card: \_\_\_\_\_ Signature: \_\_\_\_\_

## Instructions for logos and artwork:

For best results please provide us with camera-ready art. This can be mailed to us or if it is already in digital form (i.e. a computer file) you can e-mail it to us.

You will get the best result if the file is a vector-based format. That means it is created in an illustration program like Adobe Illustrator, Macromedia FreeHand or Corel Draw and the file can be properly color-separated and printed at the proper resolution. If it is in a bitmap format like TIF, JPEG, PCX, PICT, BMP which are formats generated from programs like Adobe Photoshop, PC Paintbrush, Paintshop Pro and others, the resolution must be at least 200 dpi. We do not use art created in a word processing program like Microsoft Word or Corel Wordperfect. We cannot use art created in presentation software like Microsoft Powerpoint. Because of the low resolution, we cannot use logos from websites. Please call us if you have any questions about file formats and whether they can be used.

Email your logos to [logo@eotac.com](mailto:logo@eotac.com).

You can also put the logos on a CD and mail them to:

EOTAC  
1940 Old Dunbar Road  
West Columbia, SC 29172  
Attention: artwork dept.

For questions, call us toll free at 888-672-0303  
or you can email us at [orders@eotac.com](mailto:orders@eotac.com)

